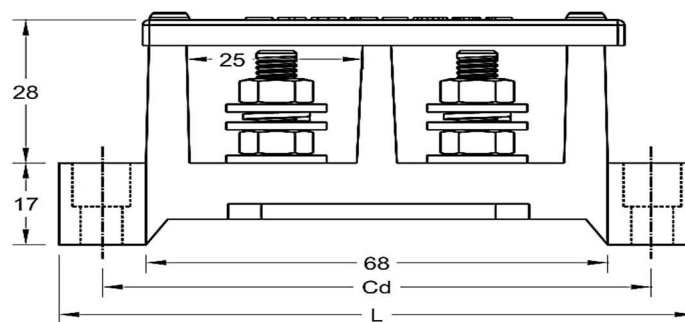


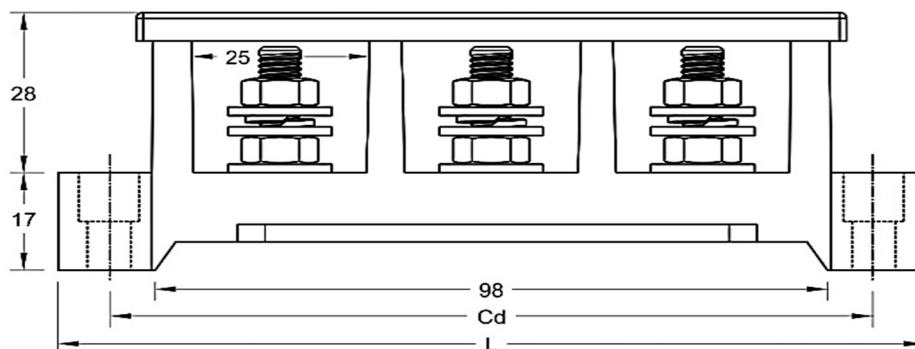
## Terminal Connectors – Single Stud Type

Terminal connectors are available in 2,3 & 4 way & are available in different rating from 63 ampere to 200 ampere. They are used as an electrical hardware and designed to provide safe and aesthetic look for the connection of wires.

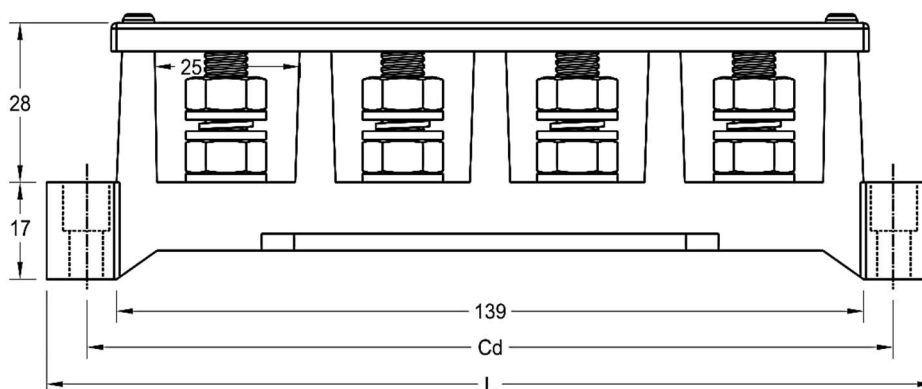


Terminal Block-2 Way (63amp & 100amp) , available with & without cover

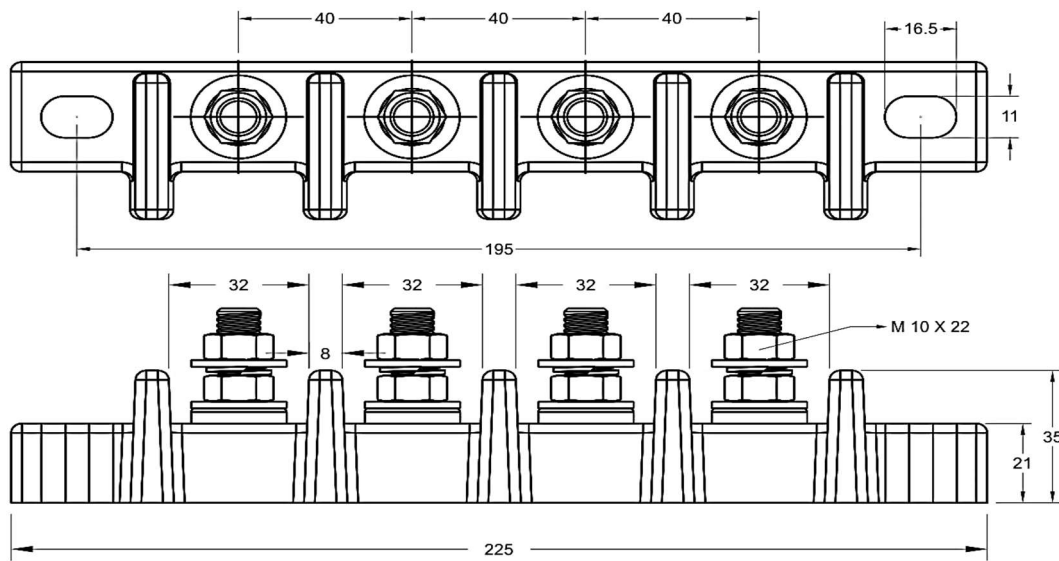
POWERMAT code	Overall Length L . mm	Distance Between Holes CD, mm	No. of Connectors	Bolt Size
TB 2106 / *TBC 2106 ( Suitable for 63 Amp )	95	82	2	M 6 x 27.5 mm
TB 2108 / *TBC 2108 ( Suitable for 100 Amp )	95	82	2	M 8 x 27.5 mm


**Terminal Block-3 Way (63amp & 100amp), available with & without cover**

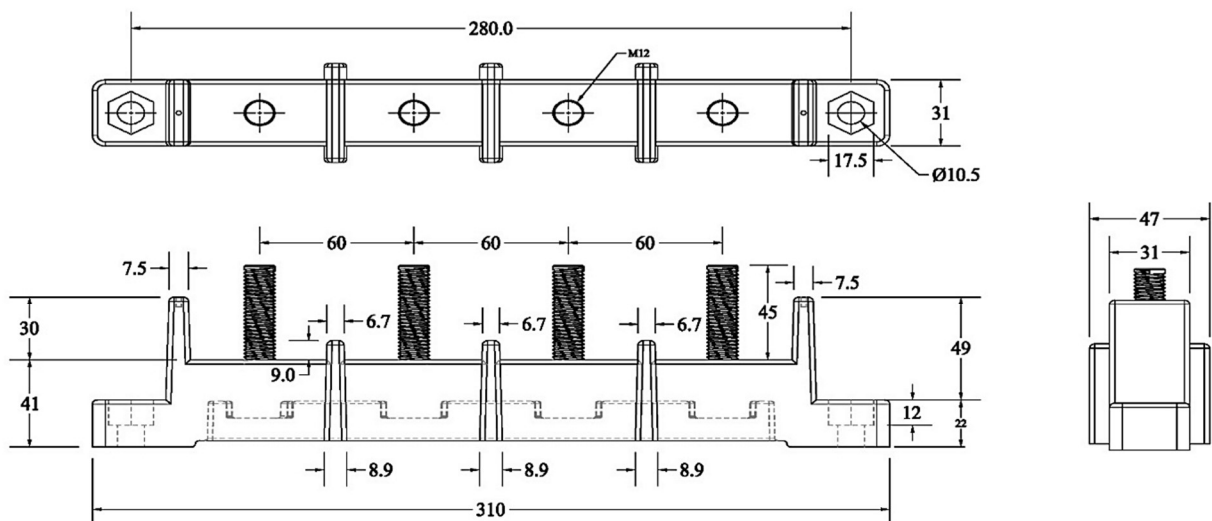
POWERMAT code	Overall Length L	Distance Between Holes Cd	No. of Connectors	Bolt Size
TB 3106 / *TBC 3106 ( Suitable for 63 Amp )	125	111	3	M 6 x 27.5 MM
TB 3108 / *TBC 3108 ( Suitable for 100 Amp )	125	111	3	M 8 x 27.5 MM


**Terminal Block-4 Way (63amp & 100amp) , available with & without cover**

POWERMAT	Overall Length L	Distance Between Holes Cd	No. of Connectors	Bolt Size
TB 4106 / *TBC 4106 ( Suitable for 63 Amp )	165	150	4	M 6 x 27.5 MM
TB 4108 / *TBC 4108 ( Suitable for 100 Amp )	165	150	4	M 8 x 27.5 MM

**TB 4210****Terminal Block-4 Way ( 150 amp) , without Cover**

POWERMAT	Overall Length L	Distance Between Holes Cd	No. of Connectors	Bolt Size
TB 4210 ( Suitable for 150 Amp )	225	195	4	M 10 x 22.0 MM

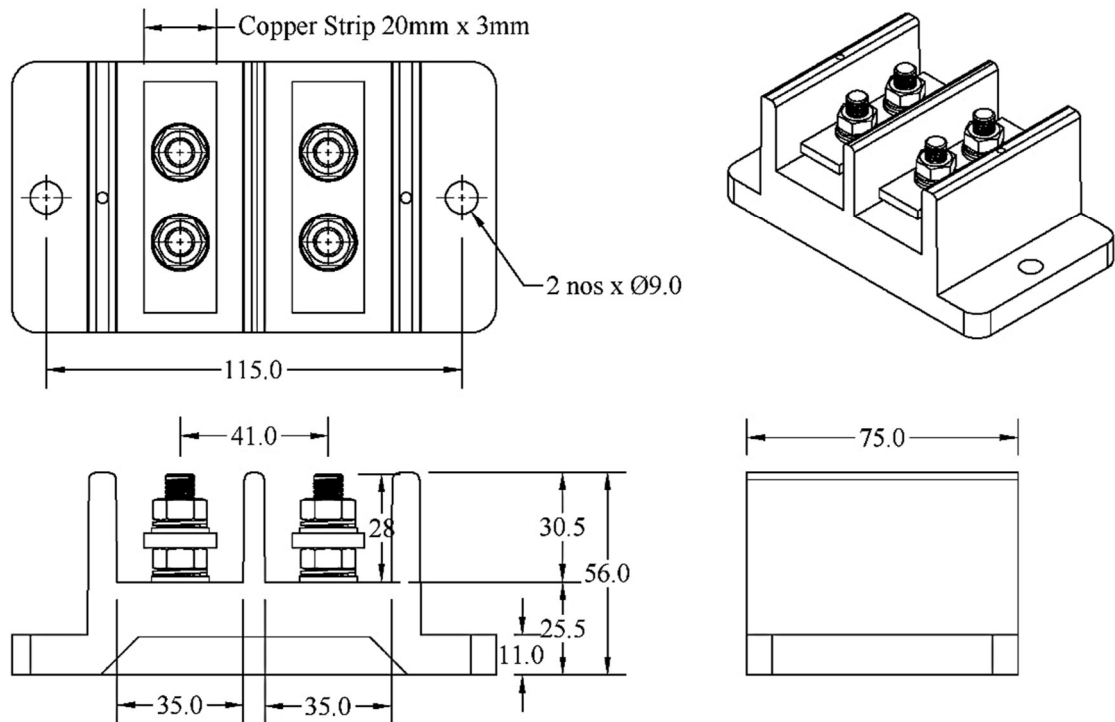
**TB 4212****Terminal Block-4 Way (200 amp) , available with & without Cover**

POWERMAT	Overall Length L	Distance Between Holes Cd	No. of Connectors	Bolt Size
TB 4212 / *TBC 4212 ( Suitable for 200 Amp )	310	280	4	M 12 x 45 MM

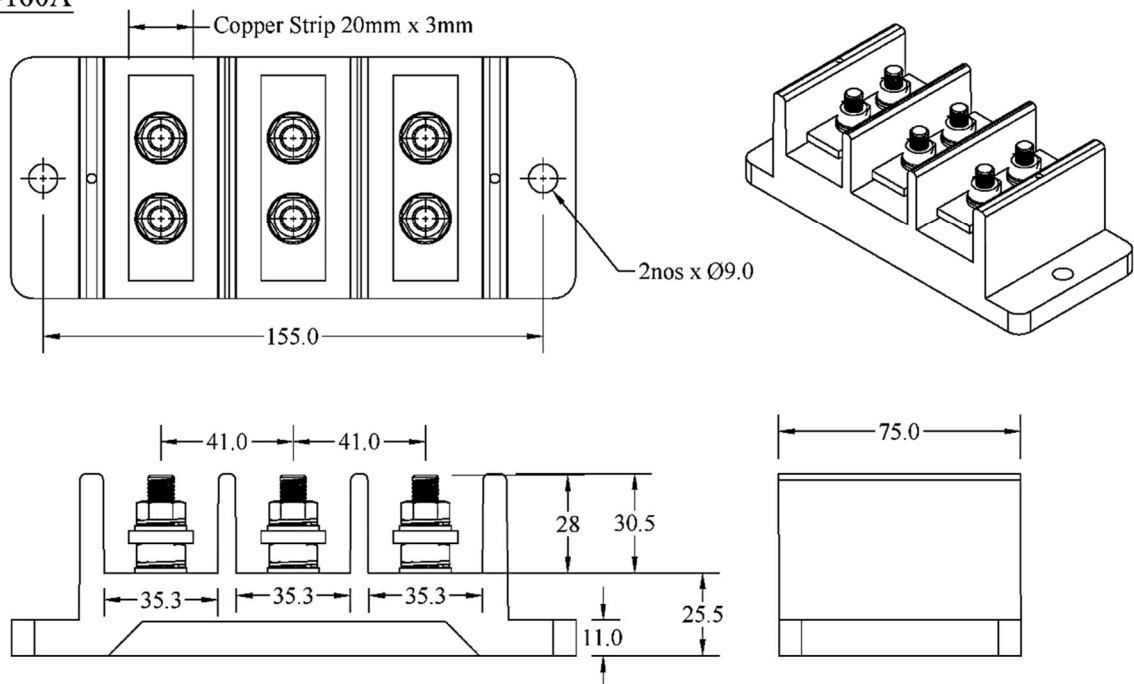
## Terminal Connectors-Double Stud Type

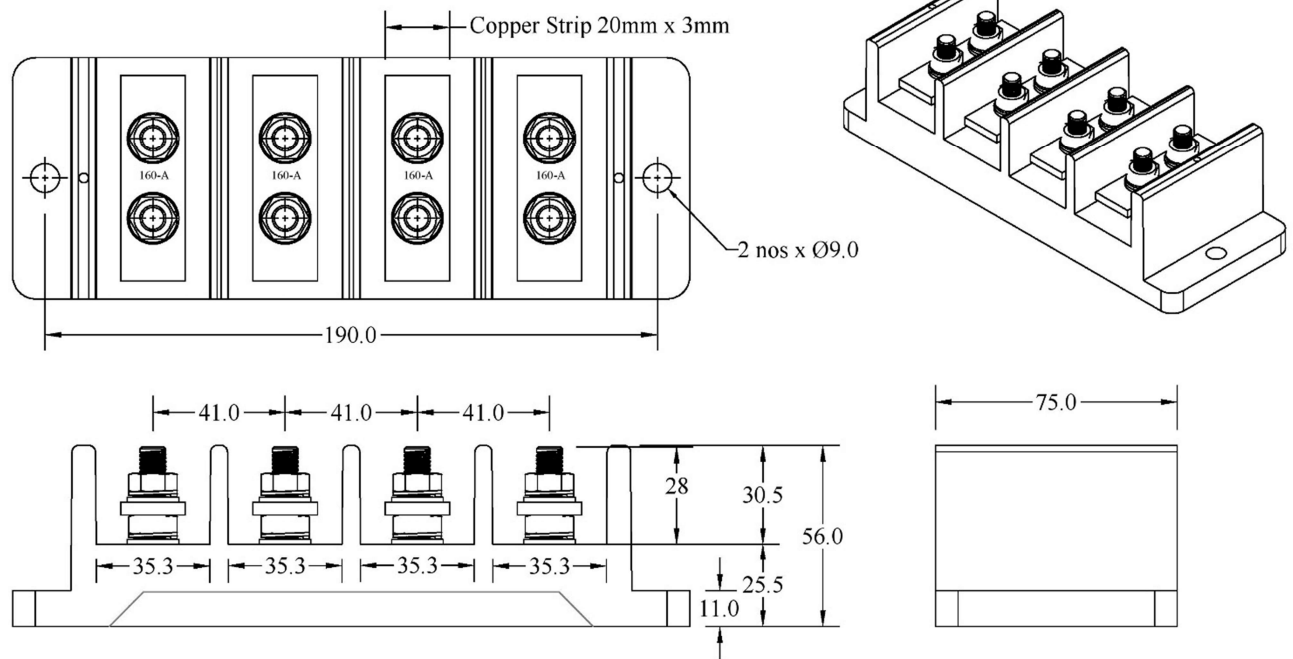
Terminal connectors are available in 2,3 & 4 way & are available in different rating from 63 ampere to 200 ampere. They are used as an electrical hardware and designed to provide safe and aesthetic look for the connection of wires.

### TC-2W-35-160A



### TC-3W-35-160A



TC-4W-35-160A

- All Dimensions are in mm only.
- Tolerance is applicable as per DIN Standard 2768.

-----**Global Commitment**

