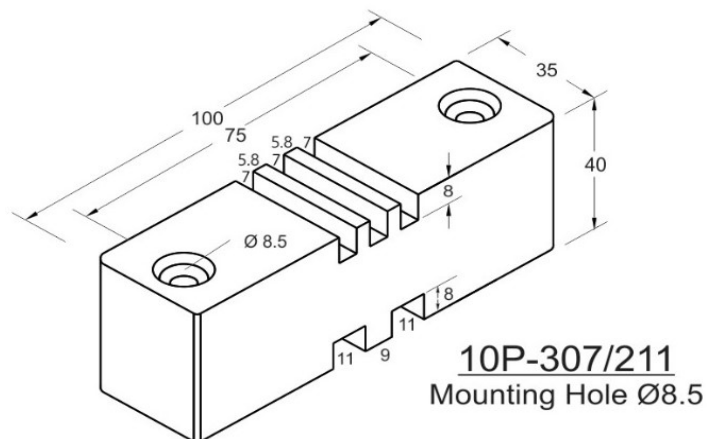
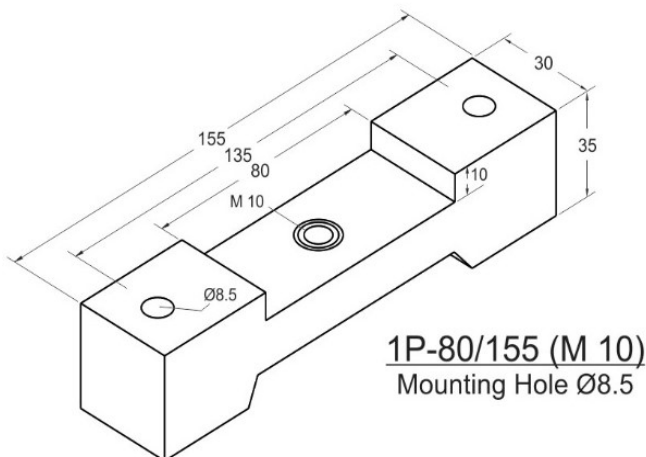
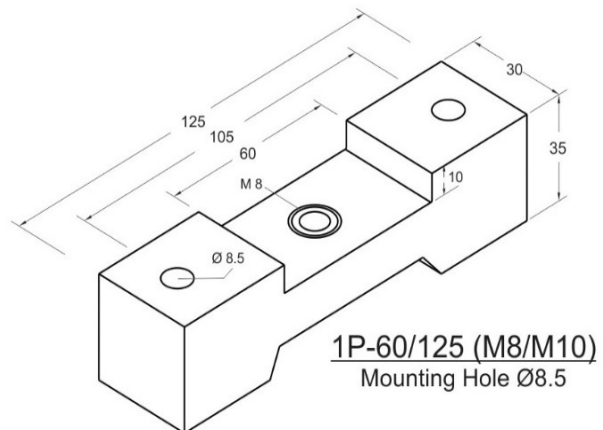
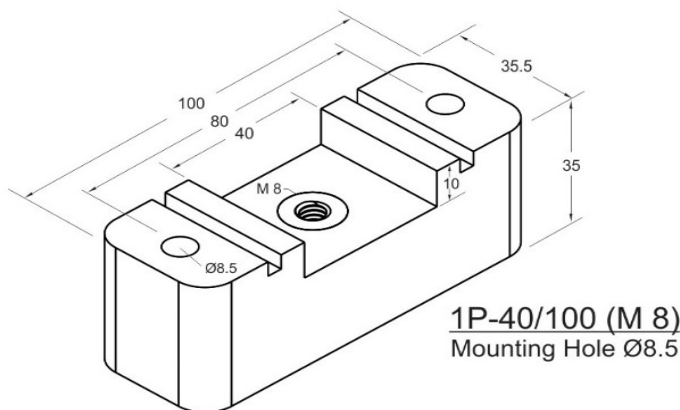
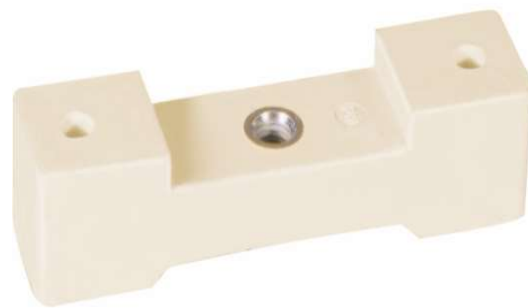
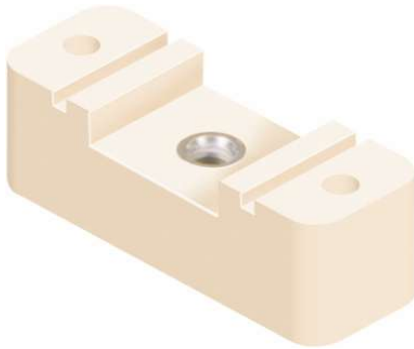


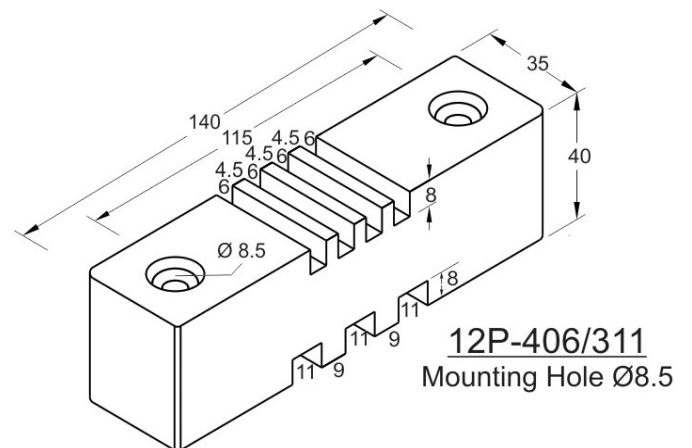
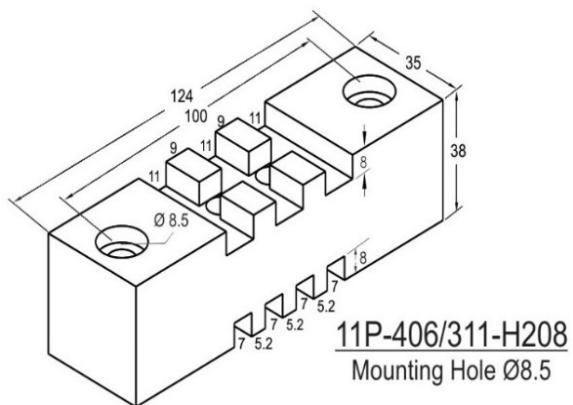
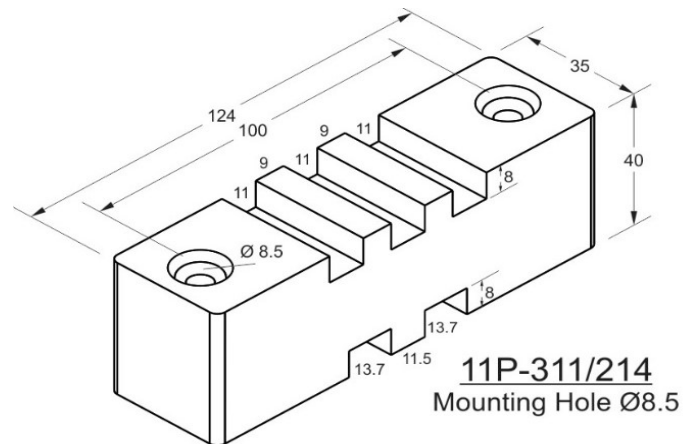
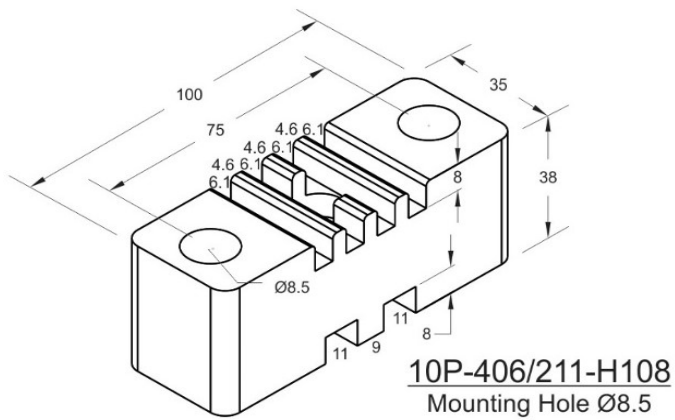
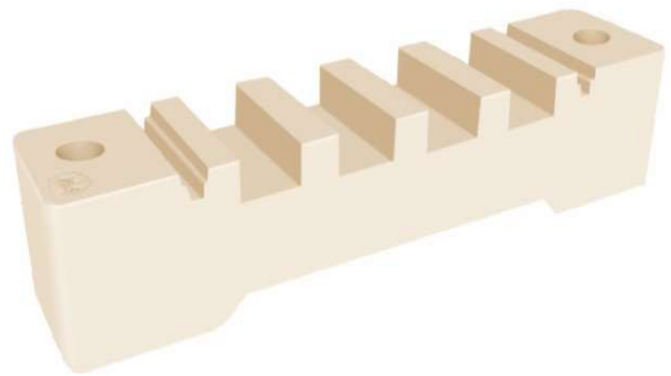
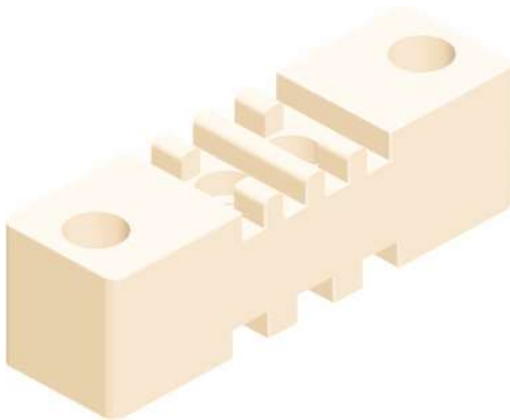
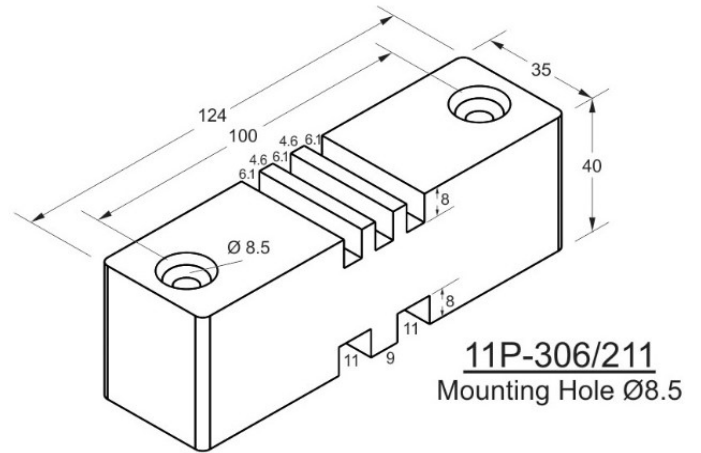
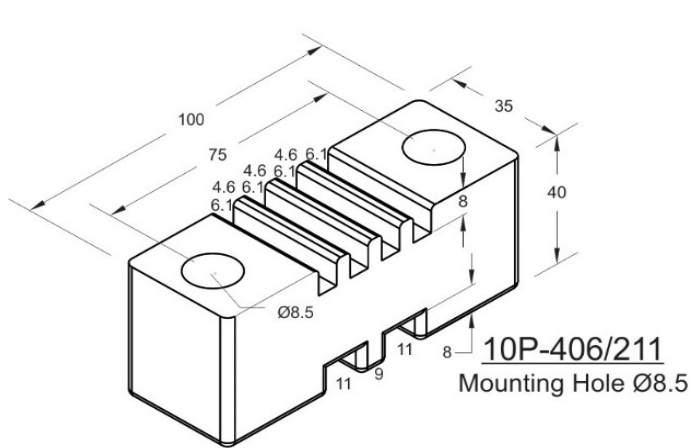
Horizontal/Vertical Busbar Supports

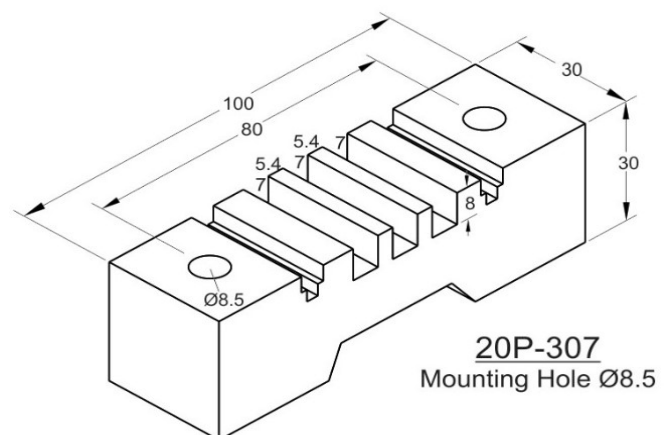
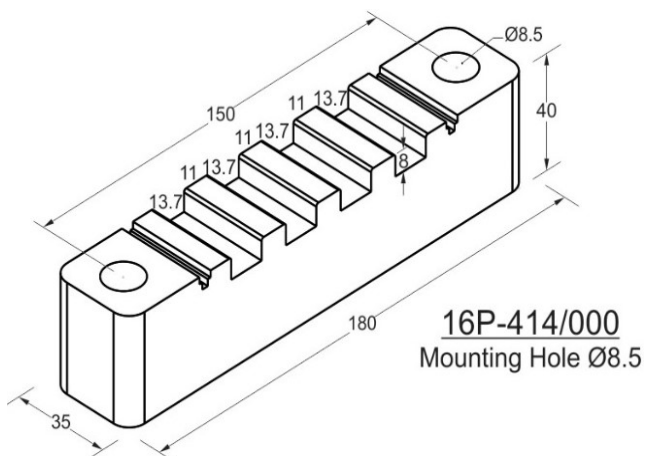
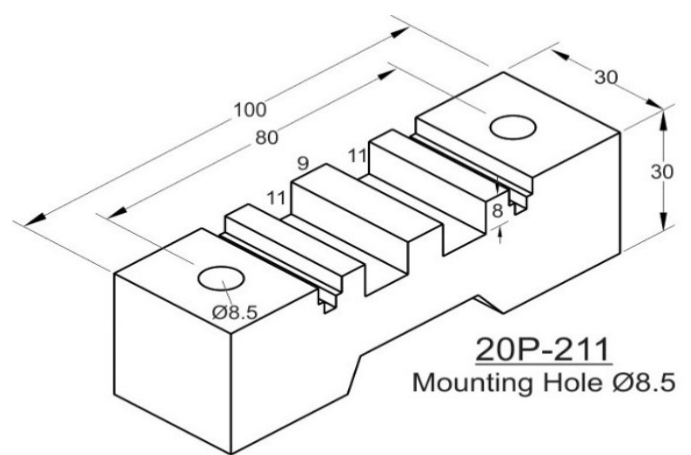
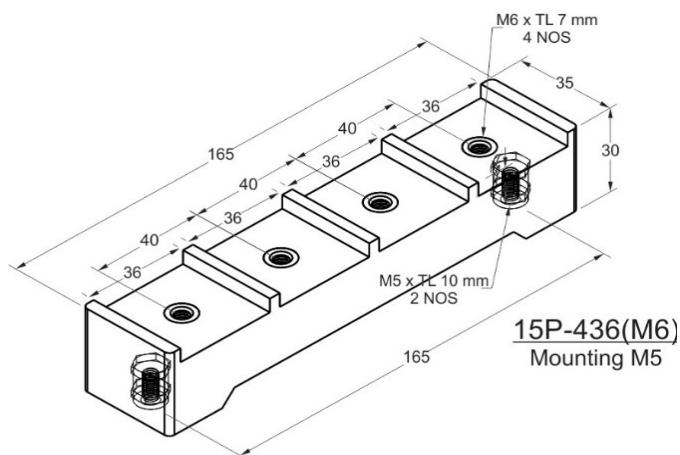
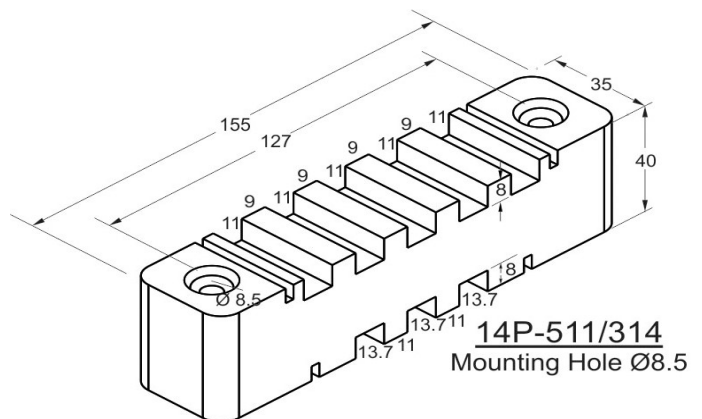
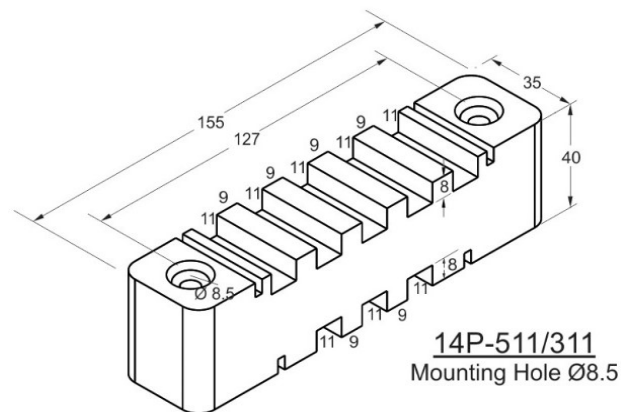
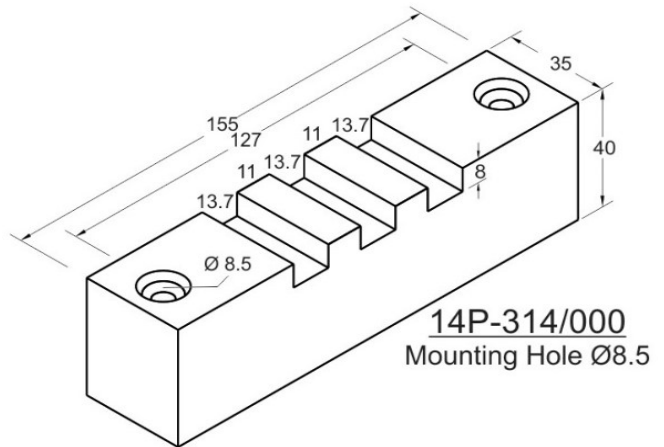
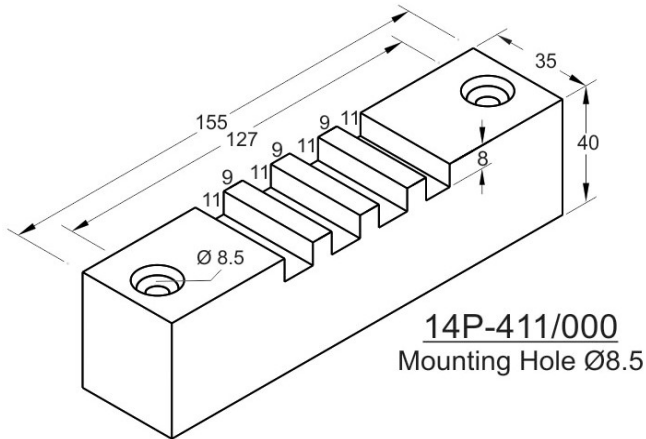
Horizontal & Vertical type Busbar Support offers versatile solution for higher short circuit rating and can hold Single Run to Multiple Runs of 6.0mm, 10mm & 12mm Busbars. HV Supports provides solution for holding Horizontal & Vertical Dropper Busbars.

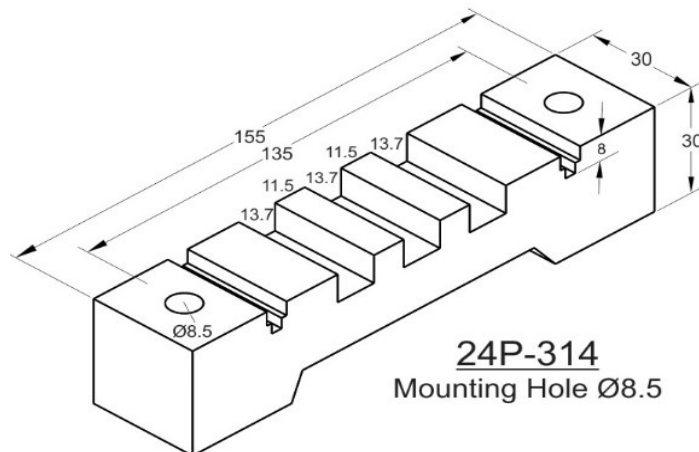
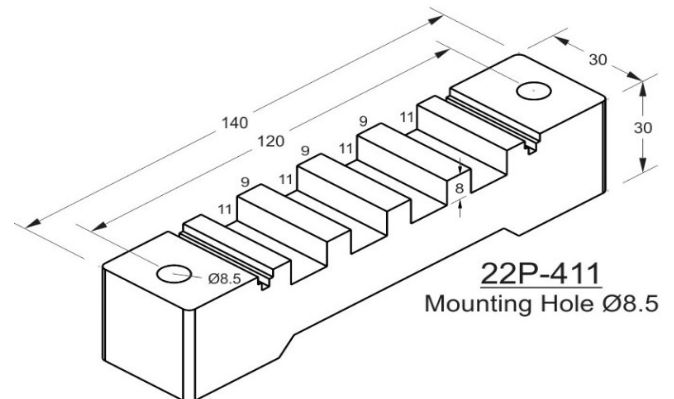
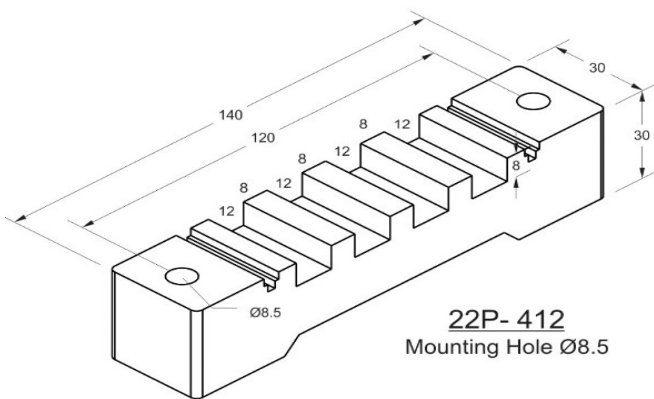
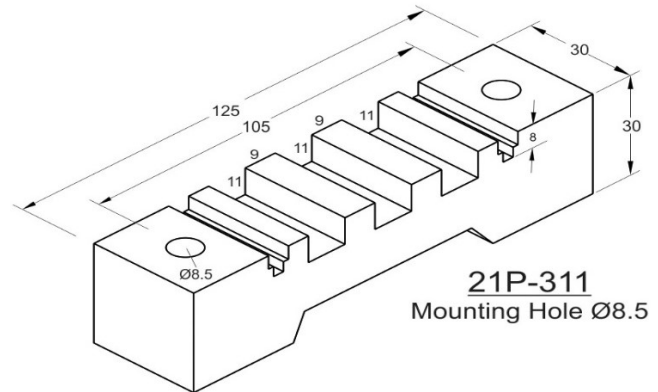
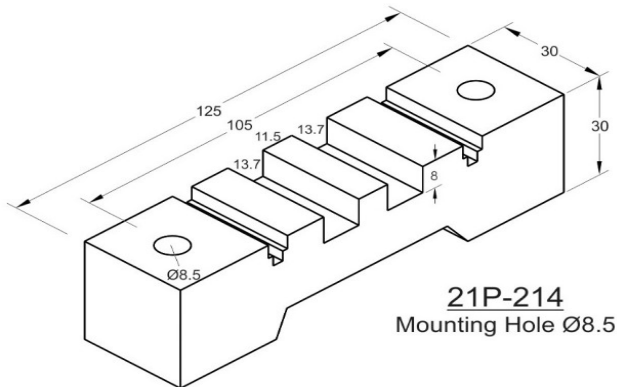
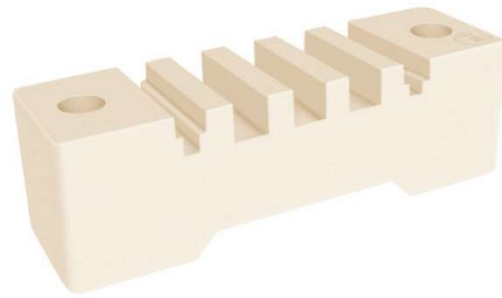
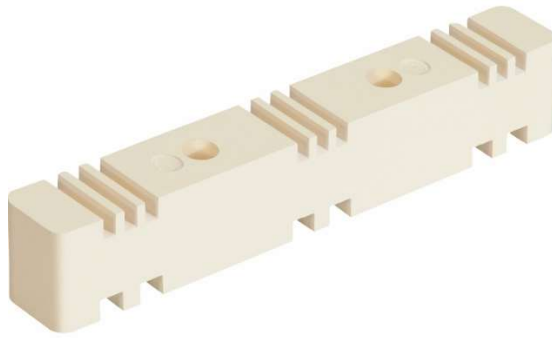
Our Busbar Supports are moulded from a flame retardant and track resistance glass reinforced Thermoset Polyester compound recognized to use for current carrying devices under UL Material Recognition No. E249670.

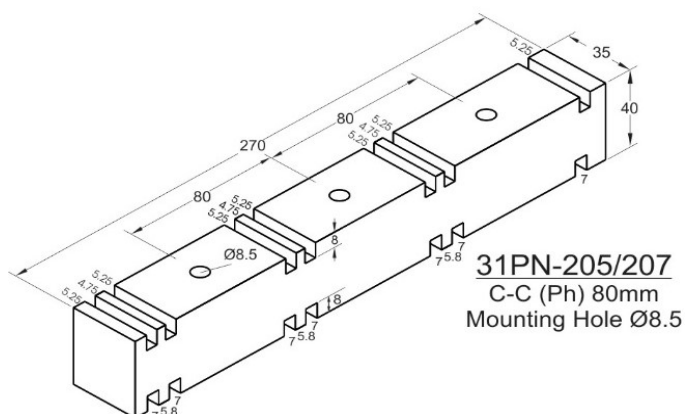
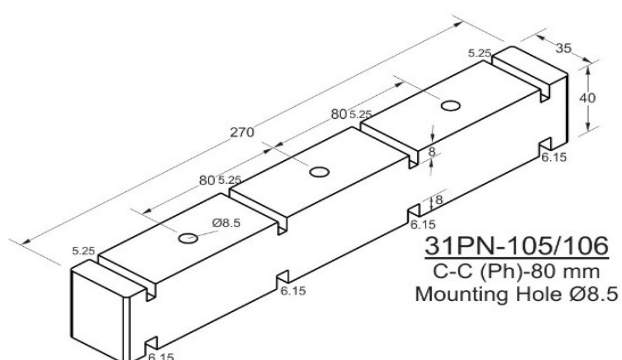
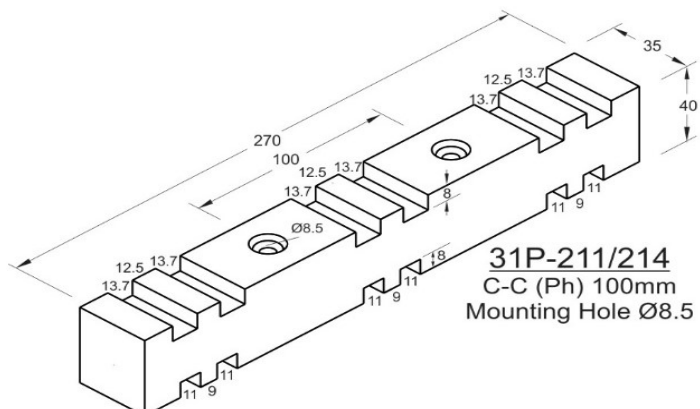
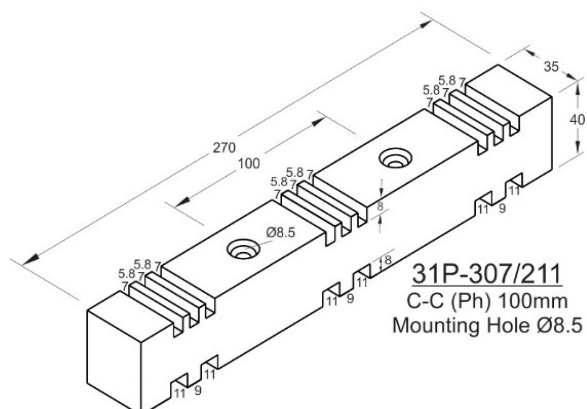
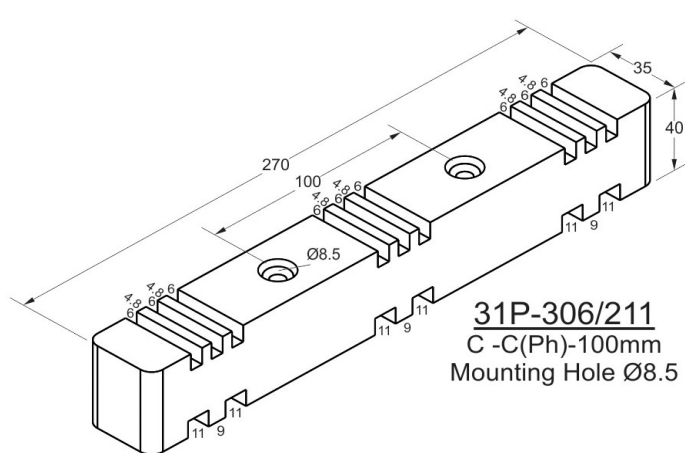
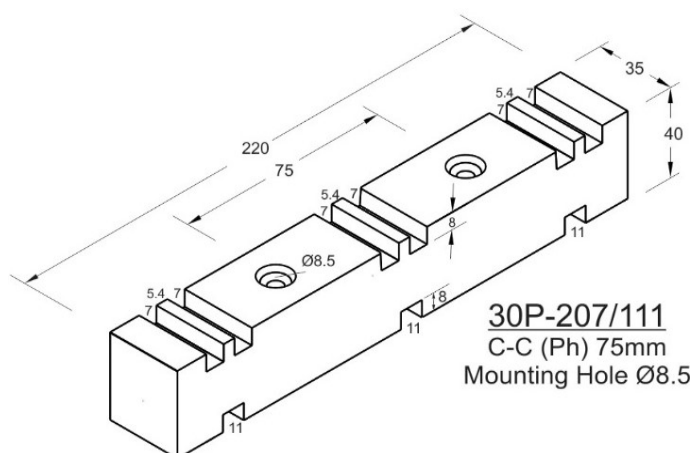
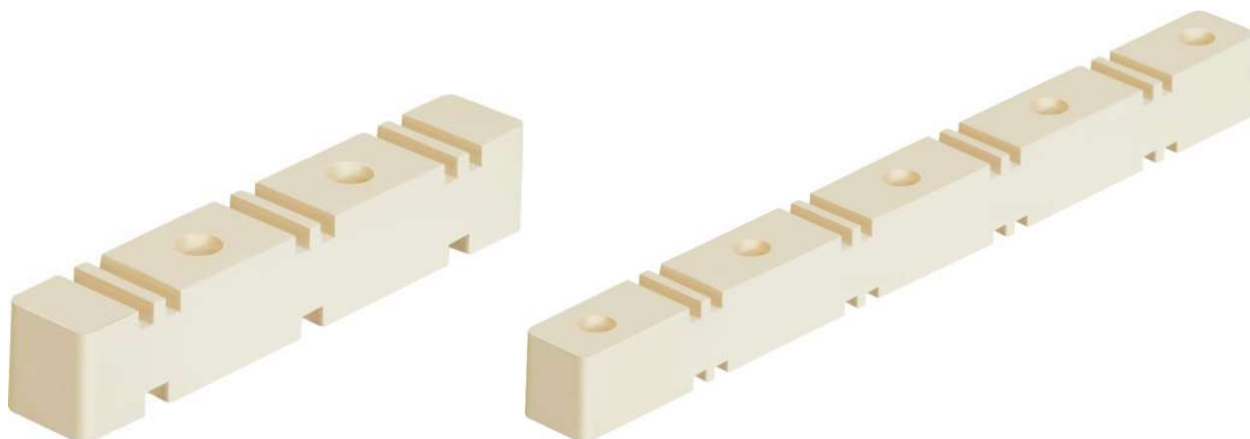
- Glow Wire Test - 960 °C
- Self-Extinguishing, UL 94 V0 Rated
- Non-Hygroscopic Material
- Halogen Free
- Operating Temperature range from (-) 40°C to 130°C.

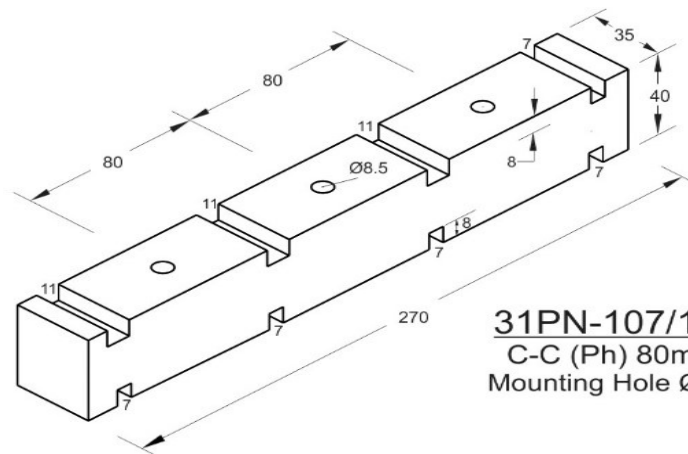




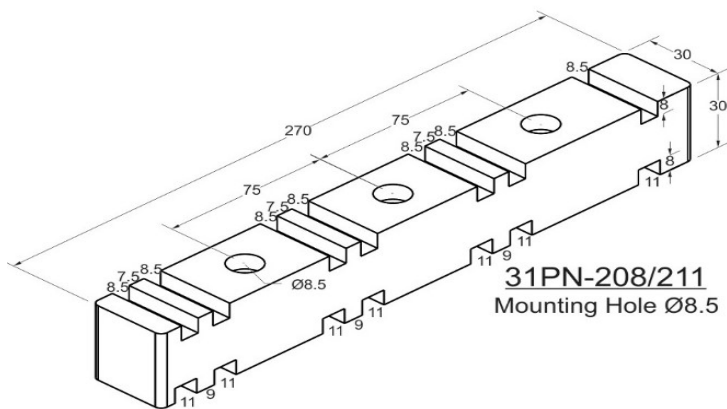




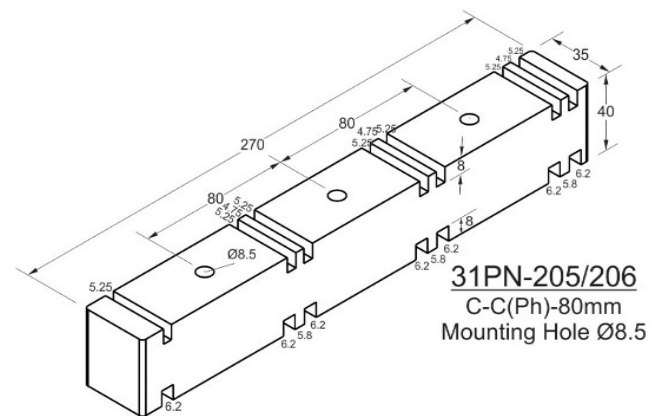




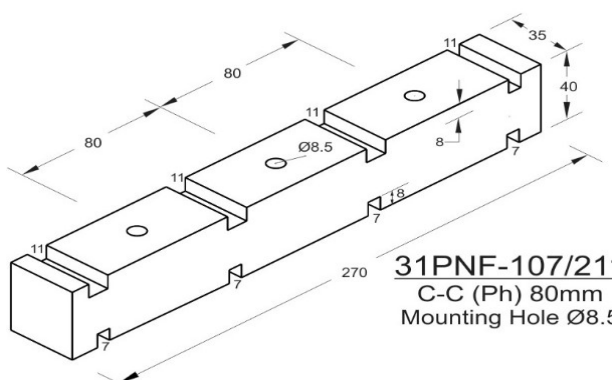
31PN-107/111
C-C (Ph) 80mm
Mounting Hole Ø8.5



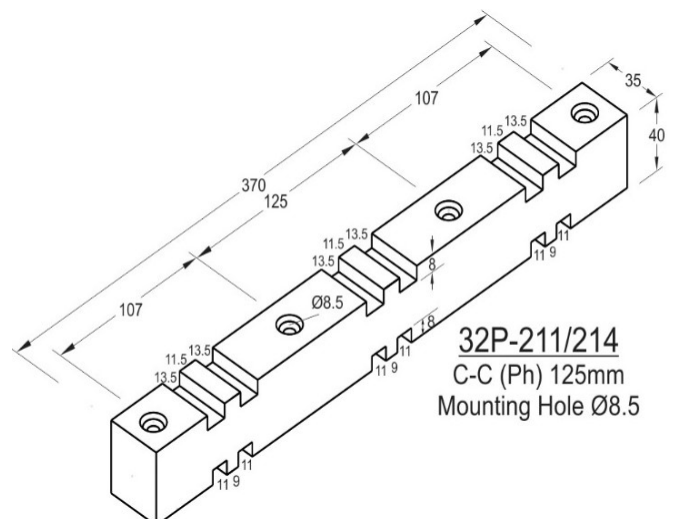
31PN-208/211
Mounting Hole Ø8.5



31PN-205/206
C-C(Ph)-80mm
Mounting Hole Ø8.5

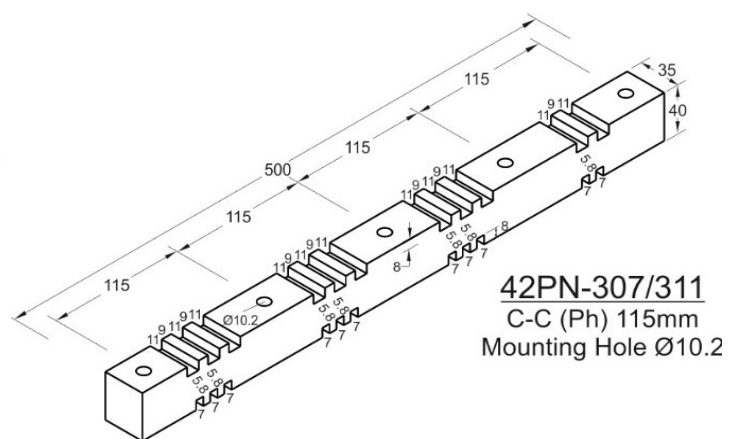
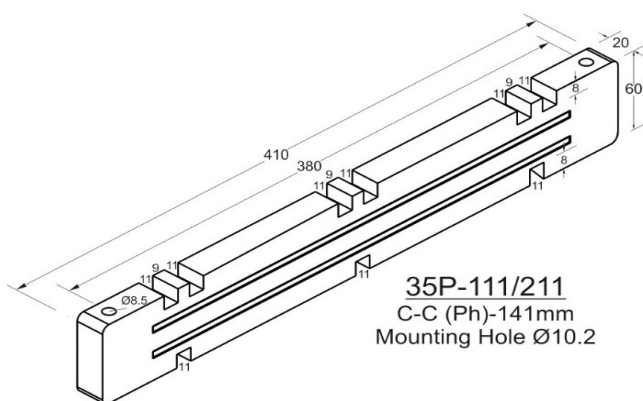
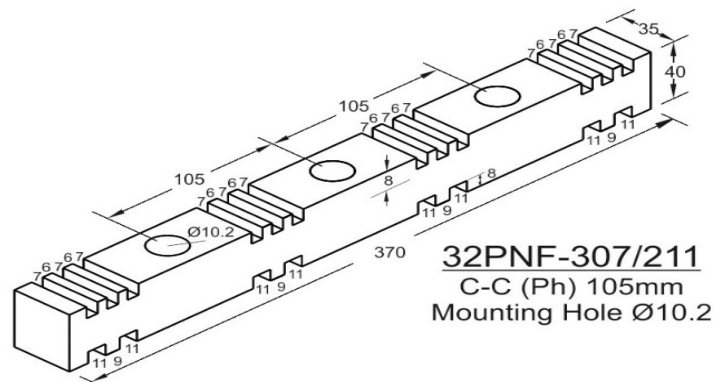
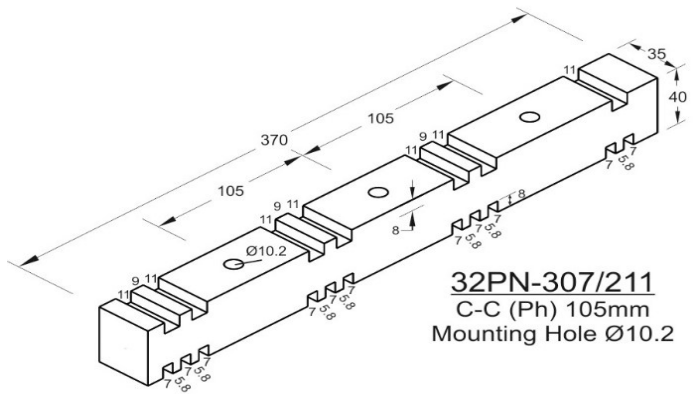
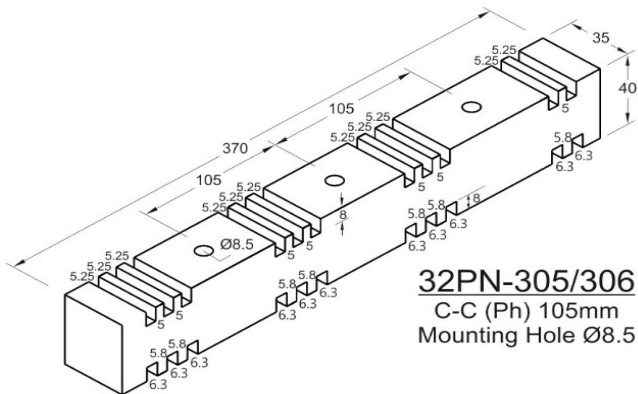
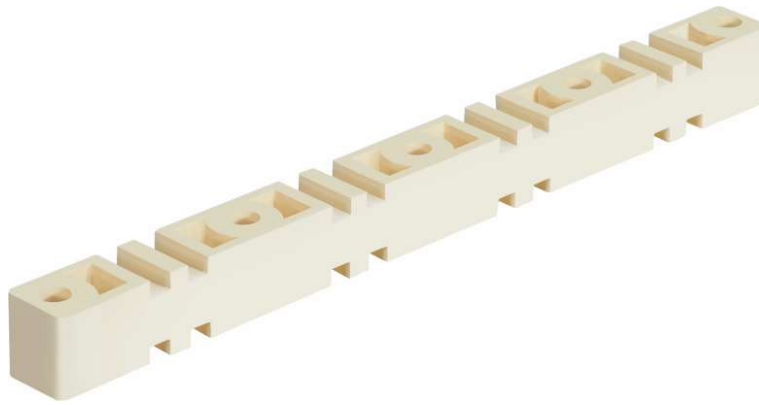


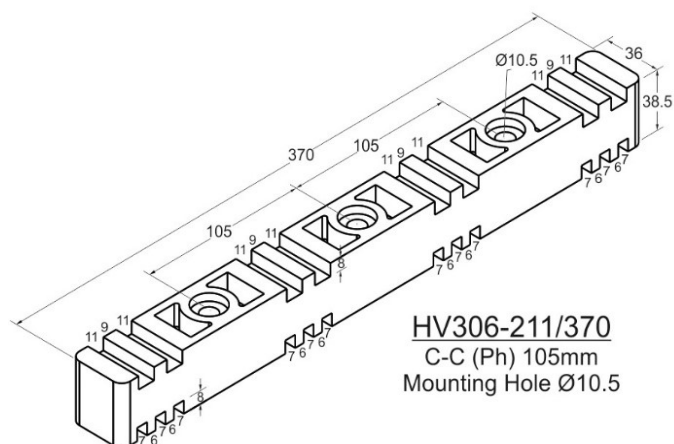
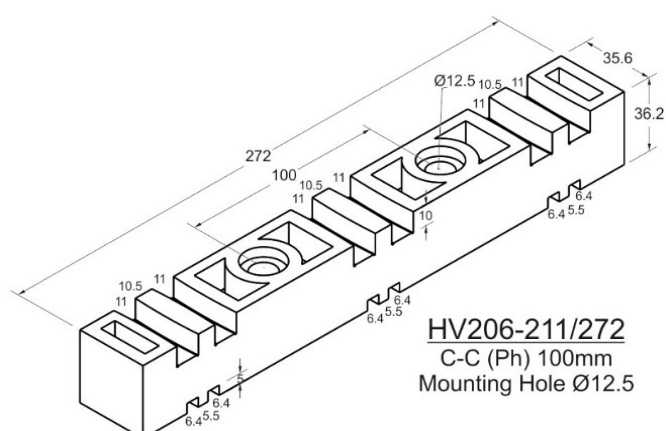
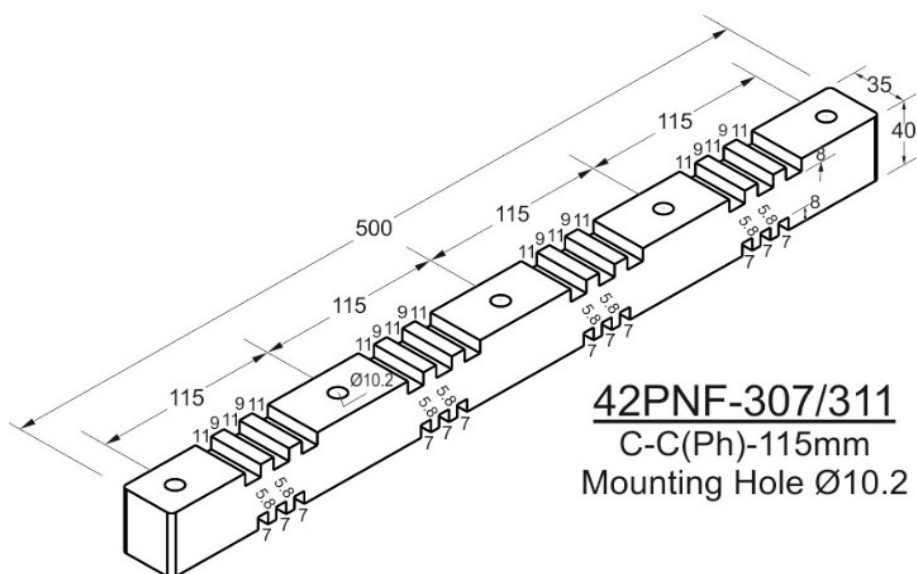
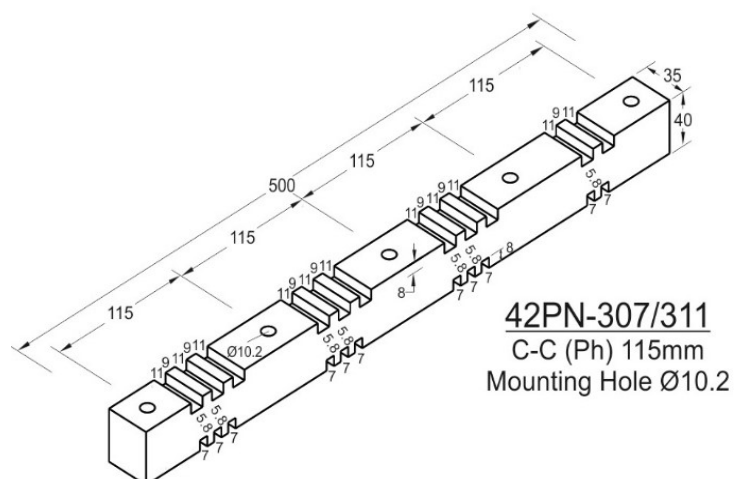
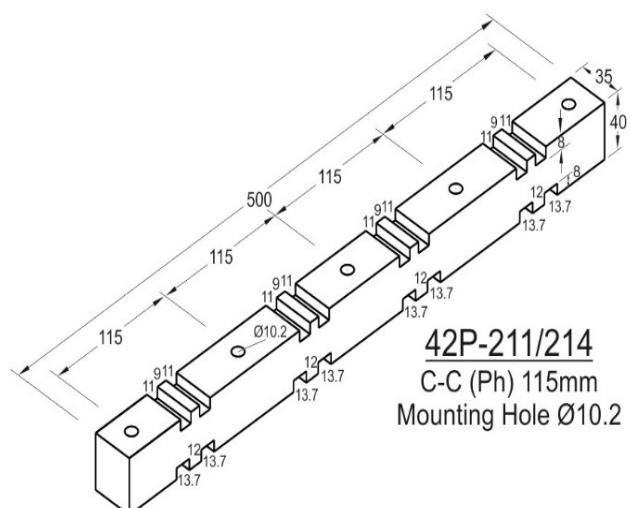
31PNF-107/21
C-C (Ph) 80mm
Mounting Hole Ø8.5

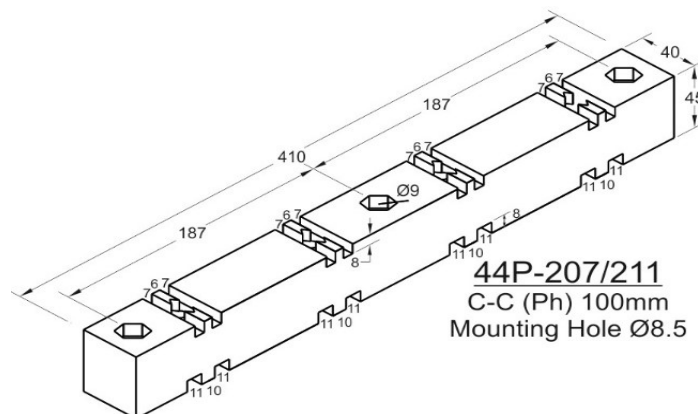
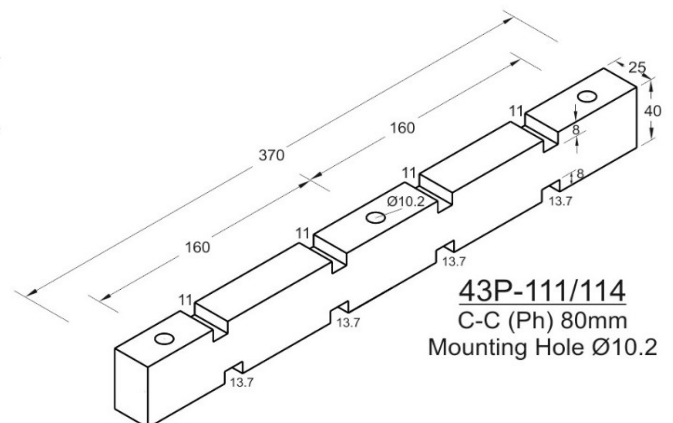
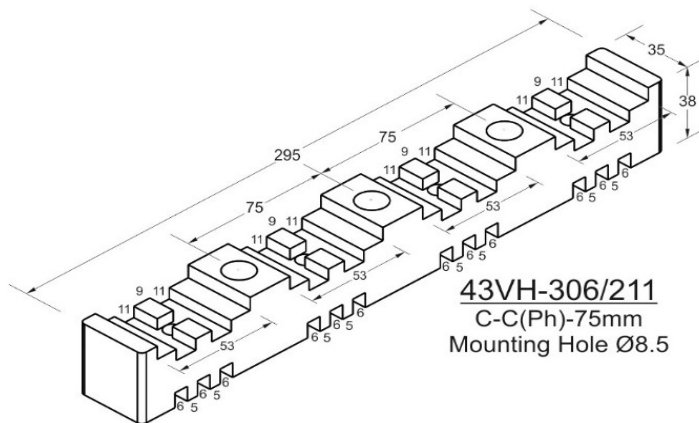
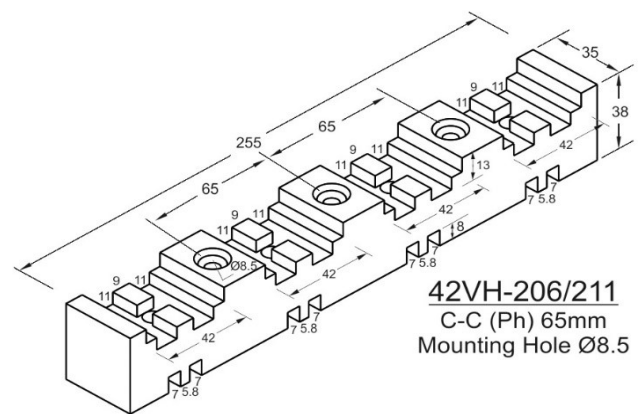
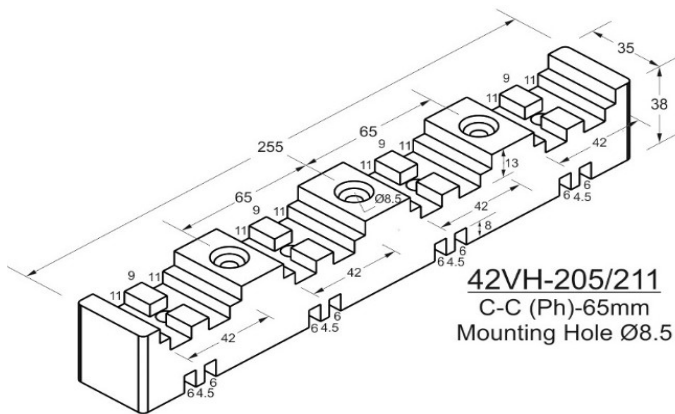
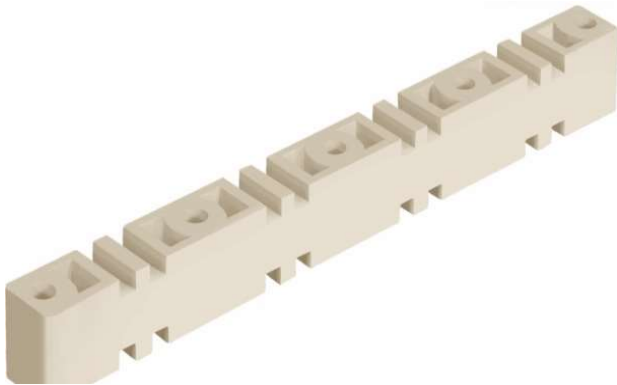


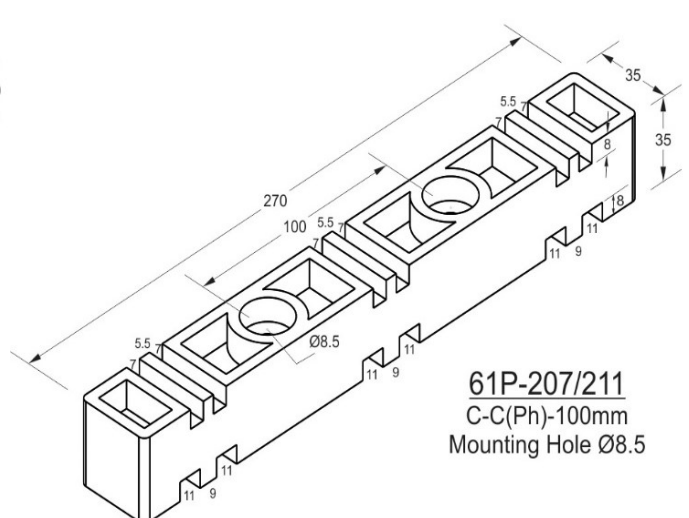
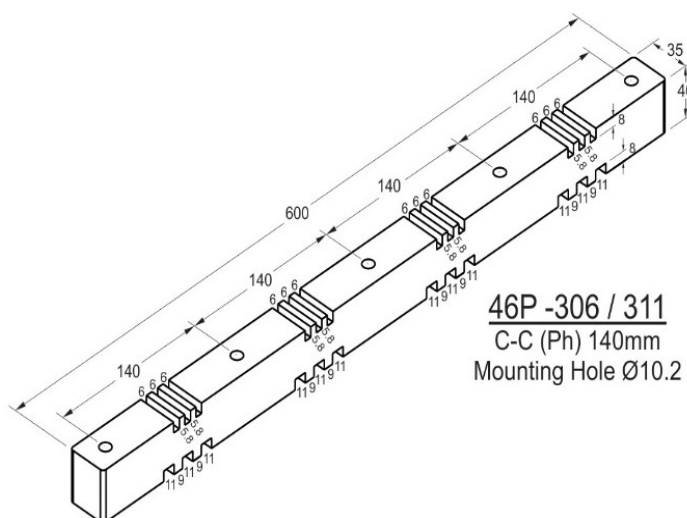
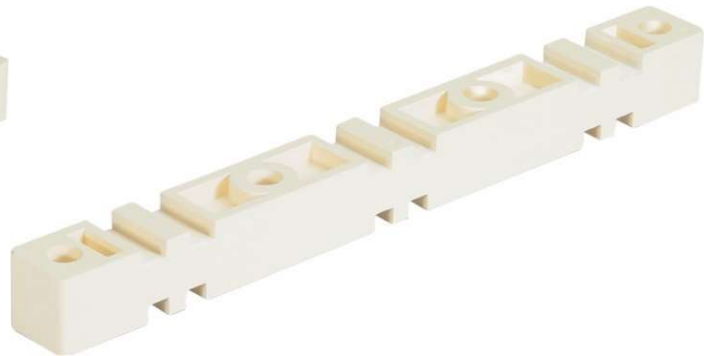
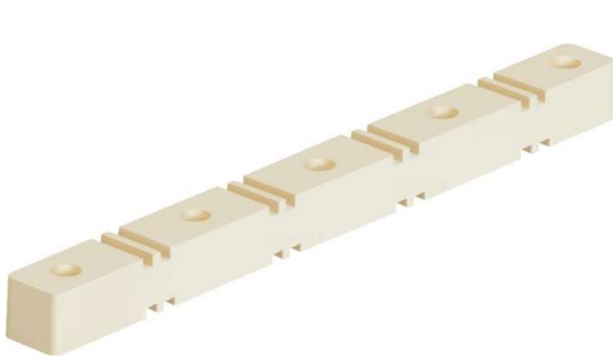
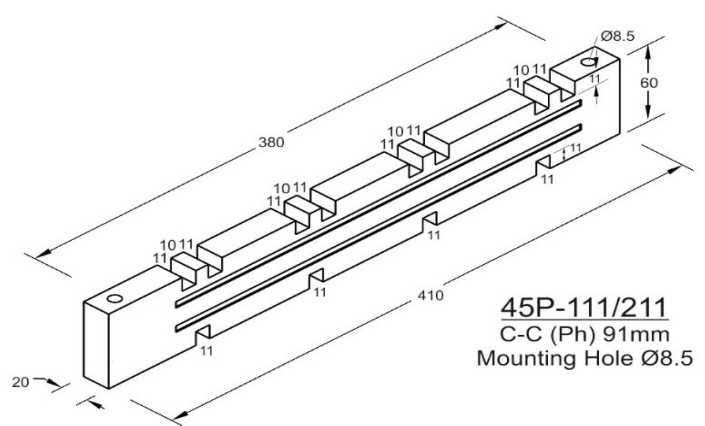
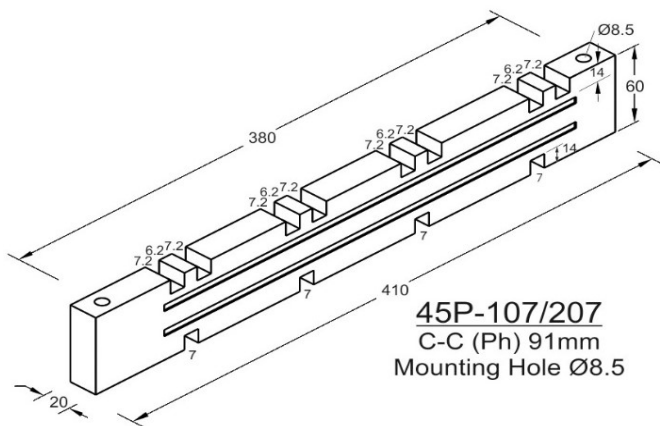
32P-211/214
C-C (Ph) 125mm
Mounting Hole Ø8.5

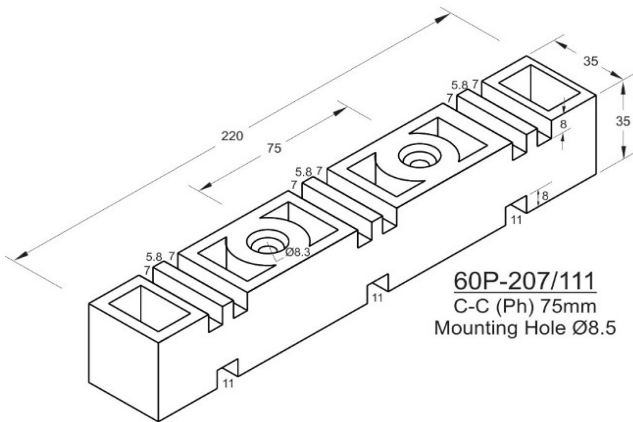




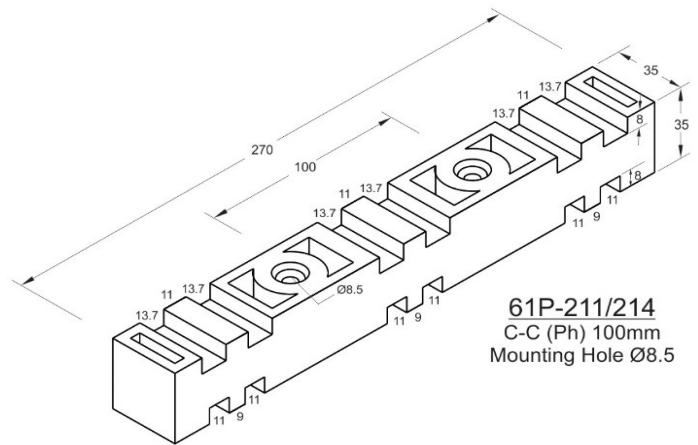




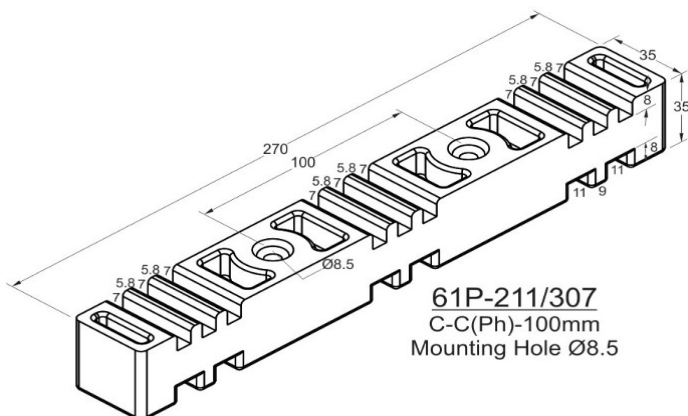




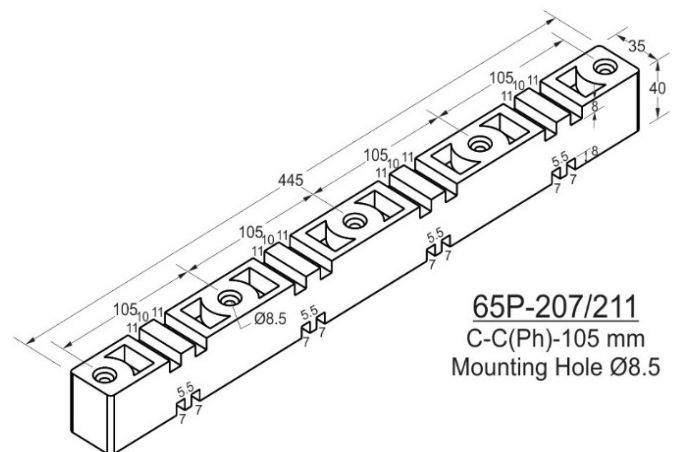
60P-207/111
C-C (Ph) 75mm
Mounting Hole Ø8.5



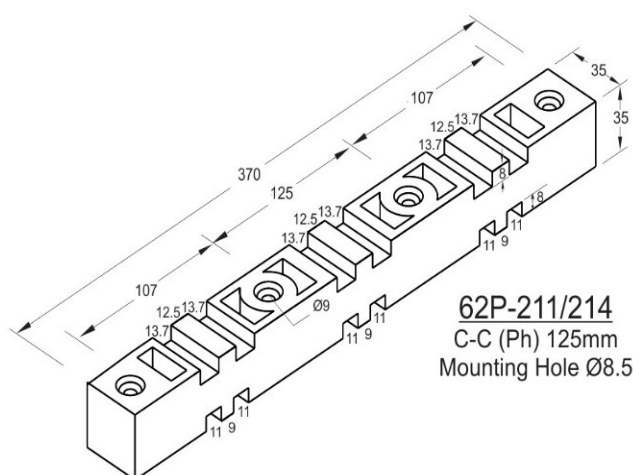
61P-211/214
C-C (Ph) 100mm
Mounting Hole Ø8.5



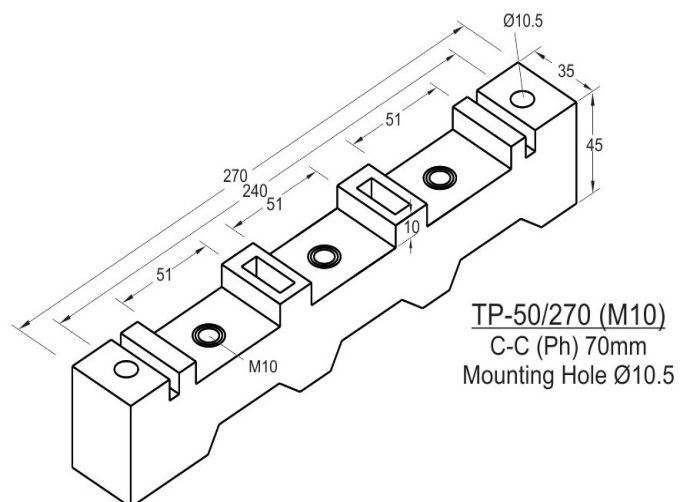
61P-211/307
C-C(Ph)-100mm
Mounting Hole Ø8.5



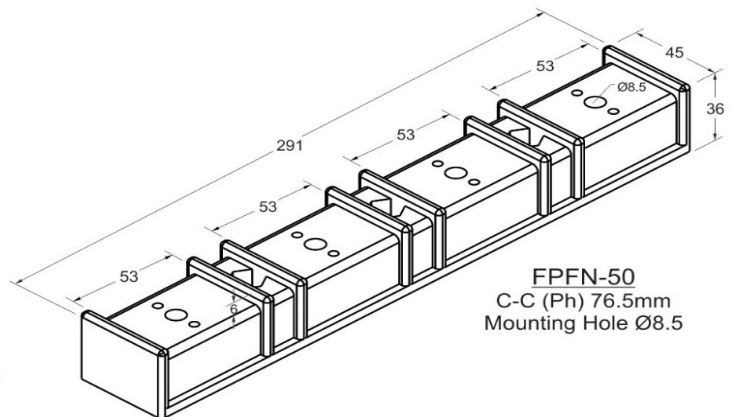
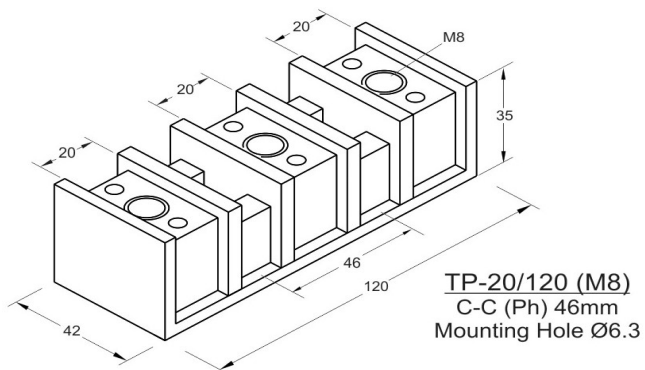
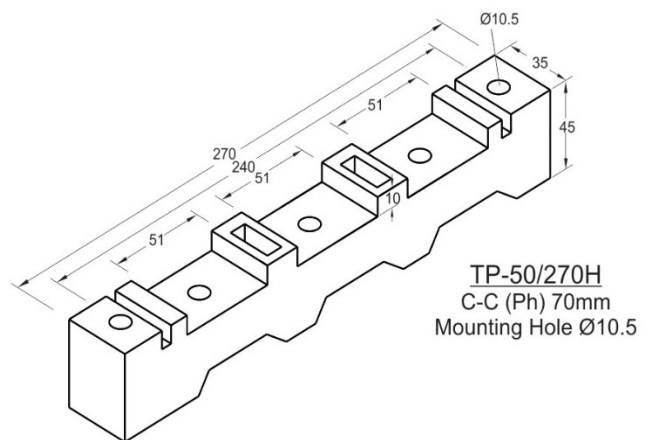
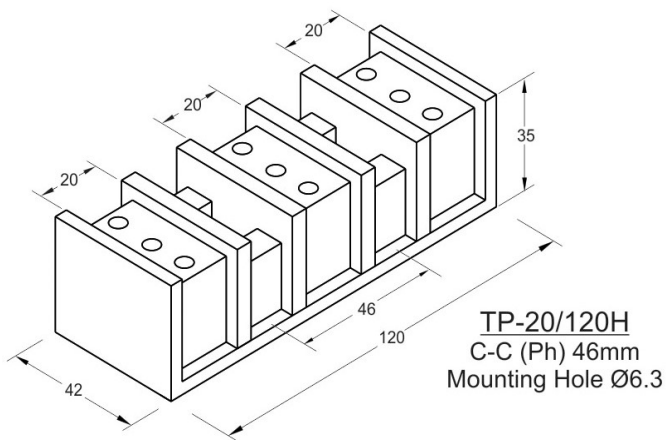
65P-207/211
C-C(Ph)-105 mm
Mounting Hole Ø8.5

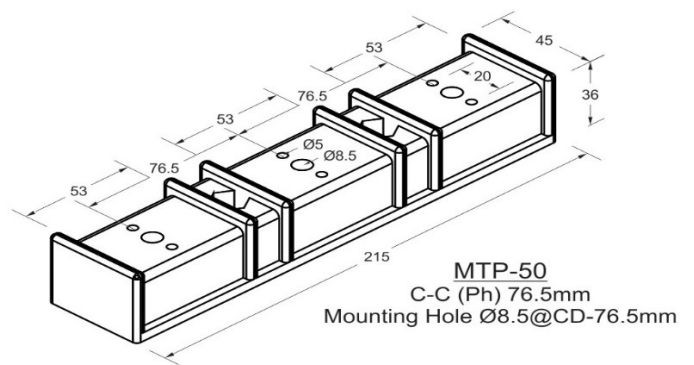
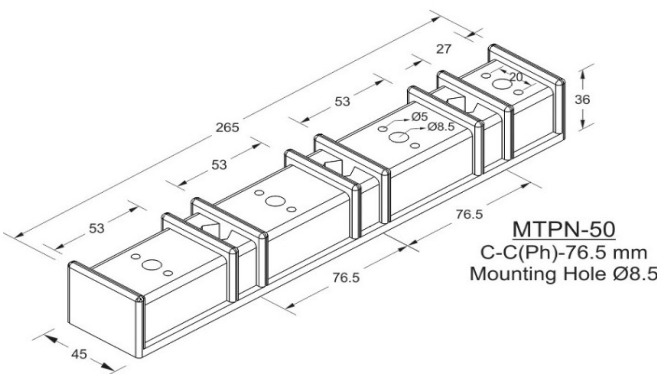
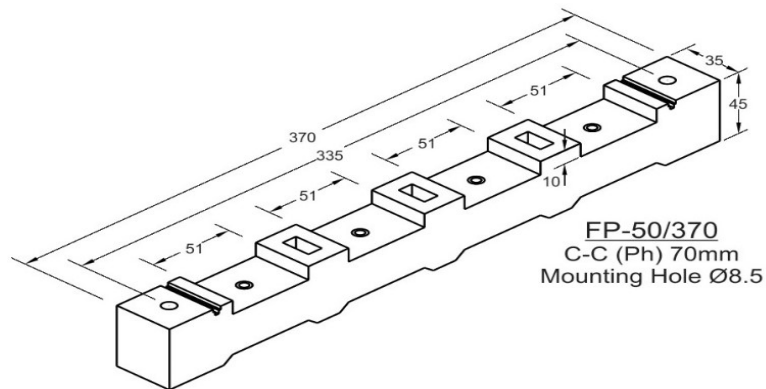
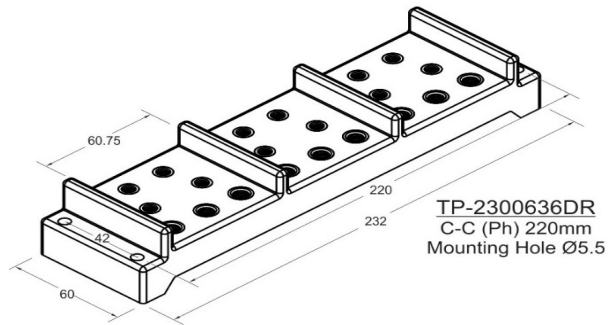
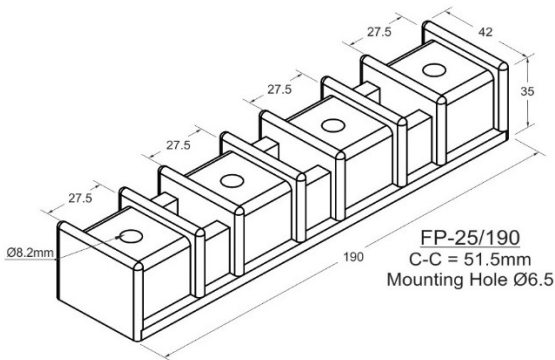
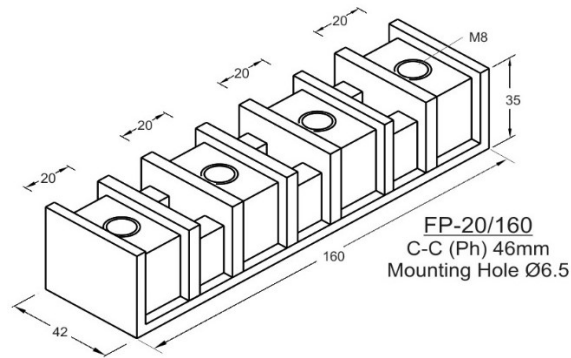


62P-211/214
C-C (Ph) 125mm
Mounting Hole Ø8.5



TP-50/270 (M10)
C-C (Ph) 70mm
Mounting Hole Ø10.5





- All Dimensions are in mm only.
- Tolerance is applicable as per DIN Standard 27

